

[University of Southern California Digital Library](#) > [Pedro Loureiro Collection](#) > Naval Attaché. Note from R. A. Boone regarding defenses of Shanghai's International Settlement, 1939

Text / Naval Attaché. Note from R. A. Boone regarding defenses of Shanghai's International ...



[Read item on contributor's website.](#) 

[Get Citation](#)

Have a question about this item? [Contact Owner](#)

Item information. [View source record on contributor's website.](#) 

Title	Naval Attaché. Note from R. A. Boone regarding defenses of Shanghai's International Settlement, 1939
Contributor	Loureiro, Pedro
Publication Information	University of Southern California
Contributing Institution	University of Southern California Digital Library
Collection	Pedro Loureiro Collection
Rights Information	Doheny Memorial Library, Los Angeles, CA 90089-1825 Send requests to address or e-mail given. Phone (213) 740-1772. USC Libraries. East Asian Library kklein@usc.edu  public domain
Type	text
Format	image/tiff
Identifier	lou-naval-383~001.tif http://doi.org/10.25549/loureiro-c12-6140  http://thumbnails.digitallibrary.usc.edu/lou-naval-383-001.jpg 
Language	English
Subject	Boone, Ronald Aubrey, 1896-1945 Sino-Japanese War, 1937-1945
Time Period	1939
Place	China Shanghai
Source	University of Southern California [Contributing entity]
Relation	Naval Attaché Reports Pedro Loureiro Collection box 4

About the collections in Calisphere

Learn more about the collections in Calisphere. View our [statement on digital primary resources](#).

Copyright, permissions, and use

If you're wondering about permissions and what you can do with this item, a good starting point is the "rights information" on this page. See our [terms of use](#) for more tips.

Share your story

Has Calisphere helped you advance your research, complete a project, or find something meaningful? We'd love to hear about it; please [send us a message](#).

Explore related content on Calisphere:

Similar items on Calisphere



0: Naval Attaché. Note from R. A.



1: Naval Attaché. General situation in



2: Naval Attaché. Report on Japan's



3: Naval Attaché. Situation in



4: Naval Attaché. Sino-Japanese

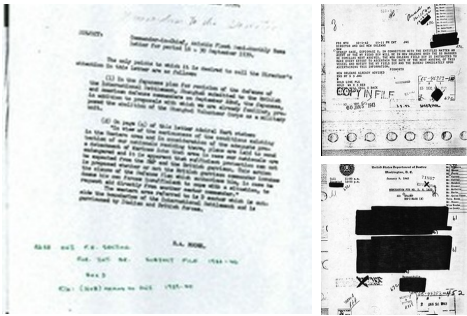


5: Naval Attaché. Memorandum of



6: U.S. Marines. Sino- Japanese

Collections containing this item (1 found)



Pedro Loureiro Collection

Institution: University of Southern California Digital Library



Connect with us:

Calisphere is a service of the [UC Libraries](#), powered by the [California Digital Library](#).

[Home](#)

[About Calisphere](#)

[Contributing Institutions](#)

[Collections](#)

[Exhibitions](#)

[FAQs](#)

[Terms of Use](#)

[Privacy Statement](#)

[Accessibility](#)

[Contact Us](#)